

Build this tiny

NATURAL HISTORY MUSEUM



You can build your very own miniature version of the home of the Minnesota Museum of the Mississippi today!

First, print these pages on heavy paper or cardstock (you'll want to have the highest-quality model, so go ahead and use the best color printer at work).

Next, cut out the twelve pieces along the outer black lines. Crease the pieces carefully along the dotted lines. The dashed lines indicate "mountain" folds, while the dotted lines indicate "valley" folds. For example, the dotted lines on the roof piece indicate the tan flaps will fold upwards to form the inside of the brick walls around the roof.

To assemble the model, follow the diagrams on the last page, which indicate with color where the glue should be placed. Please note that there are two places where the roof piece extends slightly over the back wall (see diagram at right) where the gutters are located.

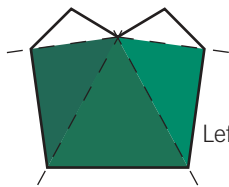


In no time at all, you'll be ready to stock your museum with interesting specimens and useless bric-a-brac. Have fun!

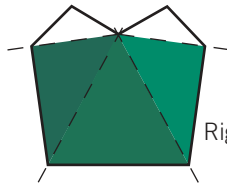
Presented by:



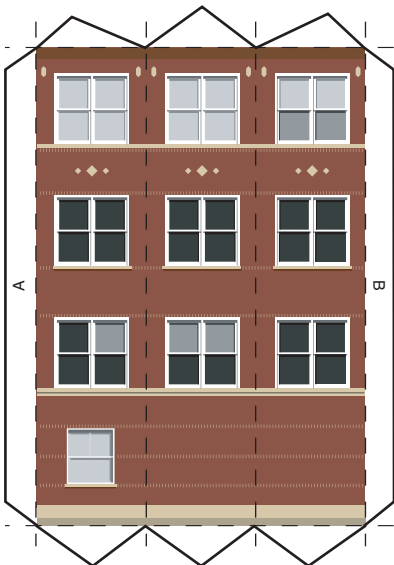
©2000 Matt Bergstrom



Left Porch Roof



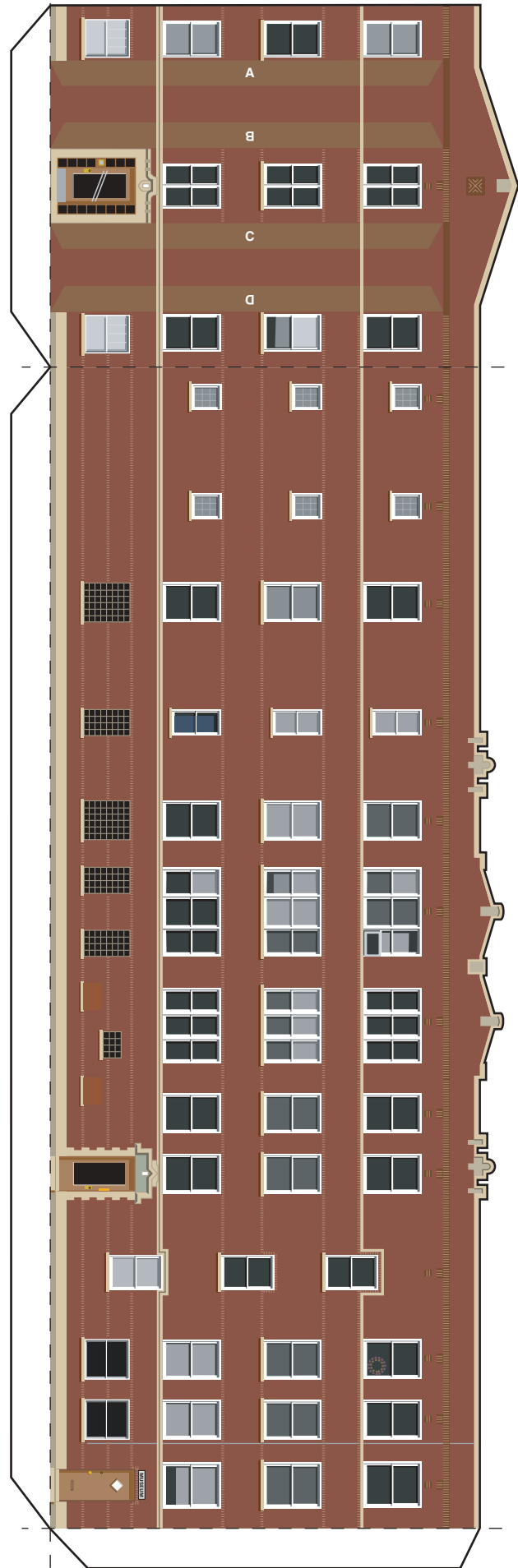
Right Porch Roof



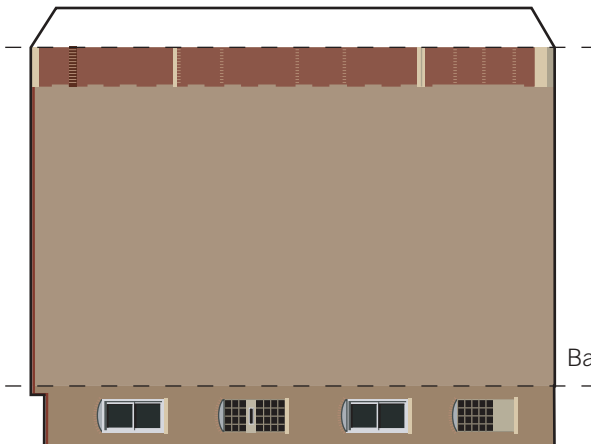
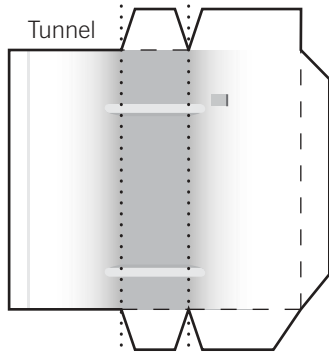
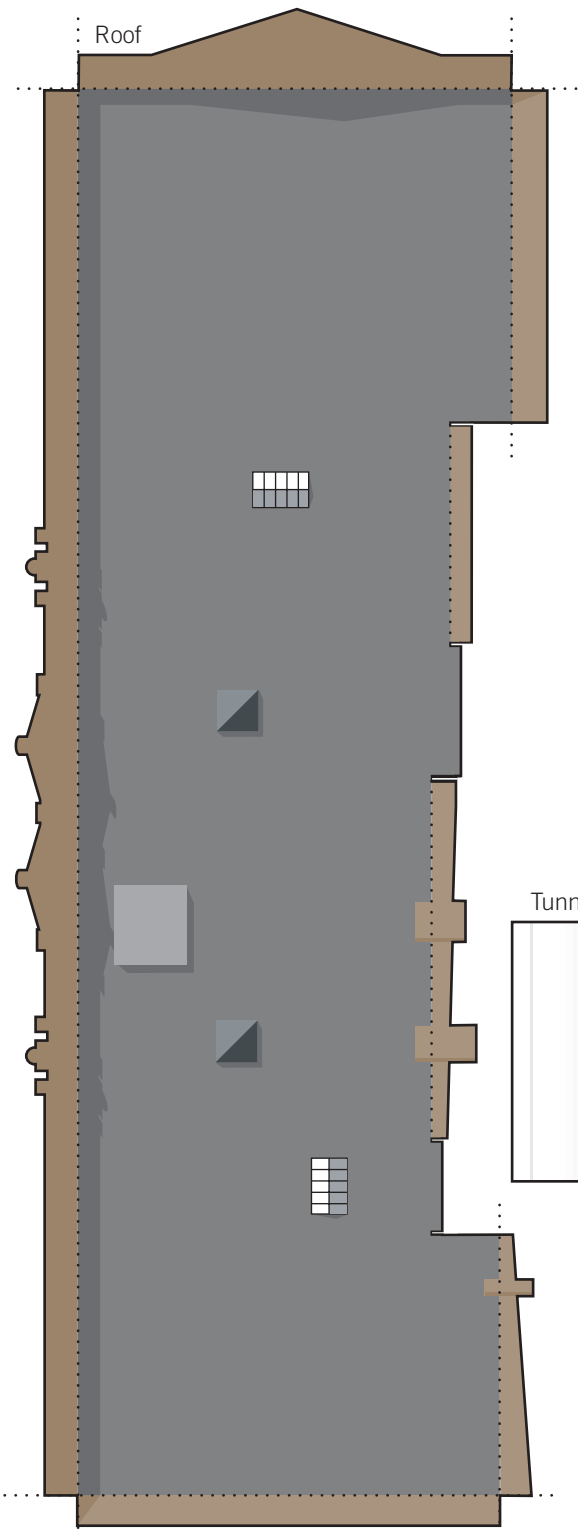
Left Porch



Right Porch

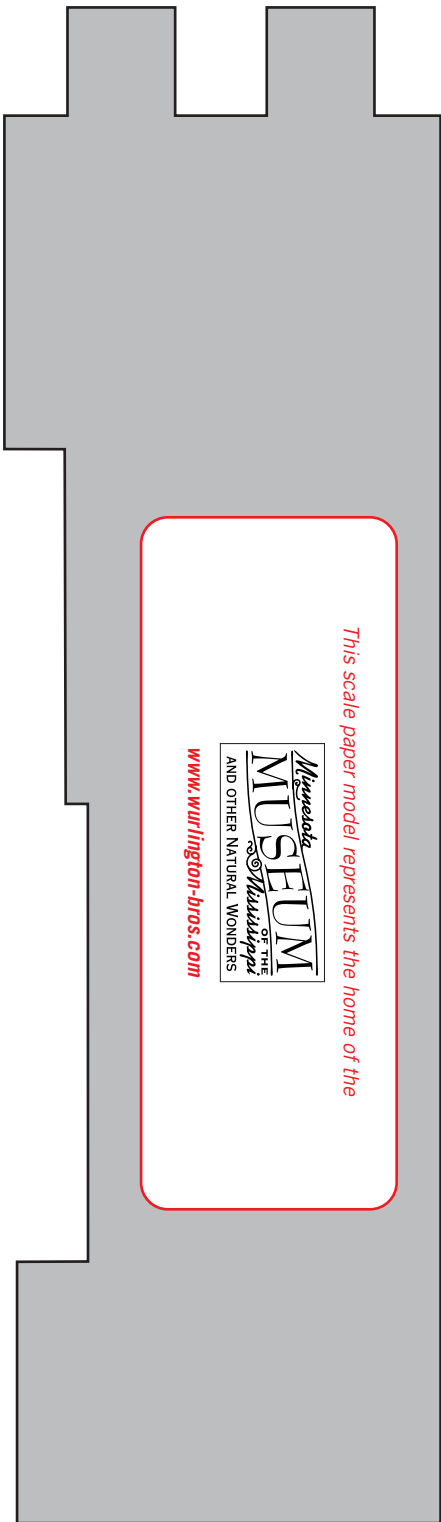


Building Front



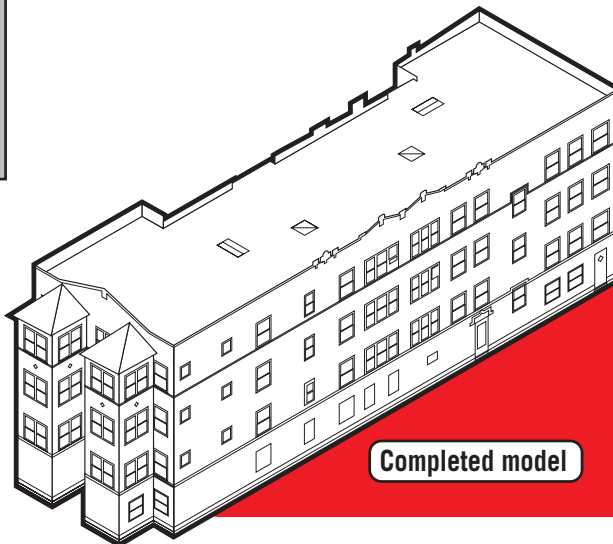
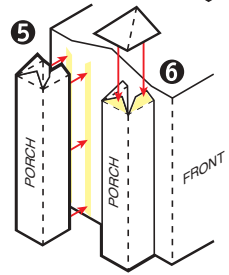
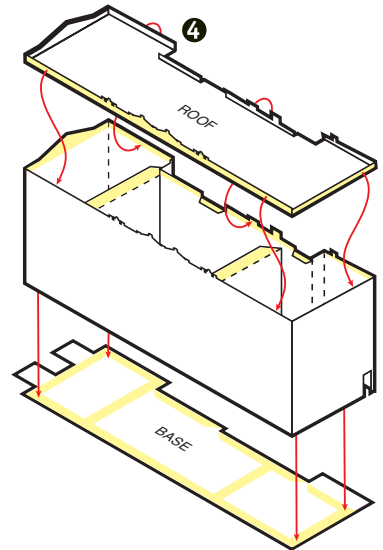
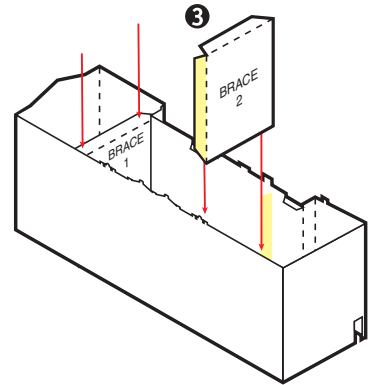
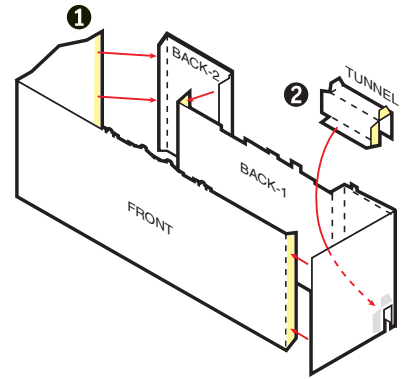
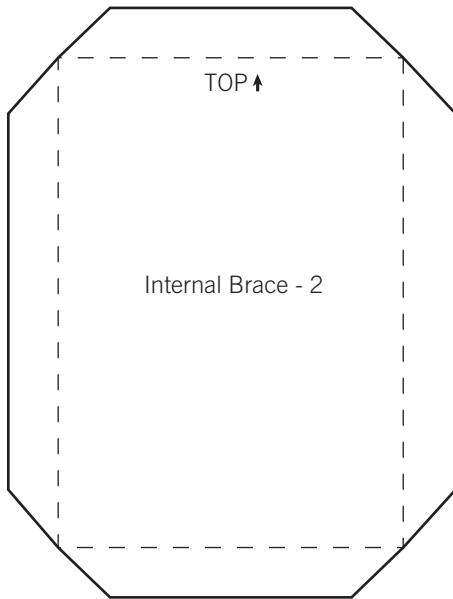
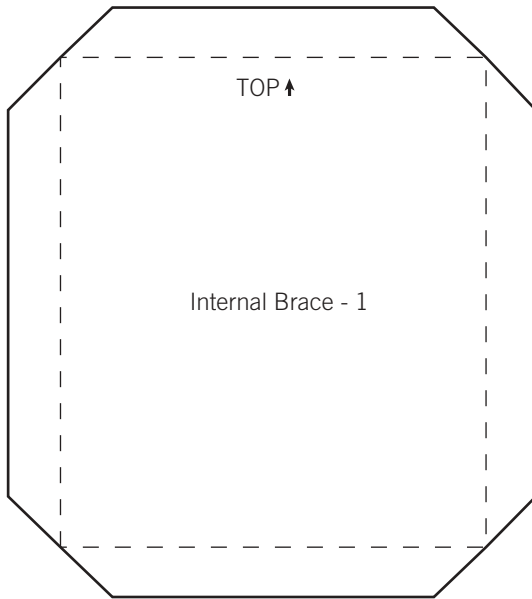
For more models of Chicago buildings,
visit the **Build Your Own Chicago** website:
www.wurlington-bros.com

Base



This scale paper model represents the home of the

www.wurlington-bros.com



Completed model



Published by
Wurlington Bros Press
 1316 W. Montrose
 Chicago, Illinois 60613
www.wurlington-bros.com