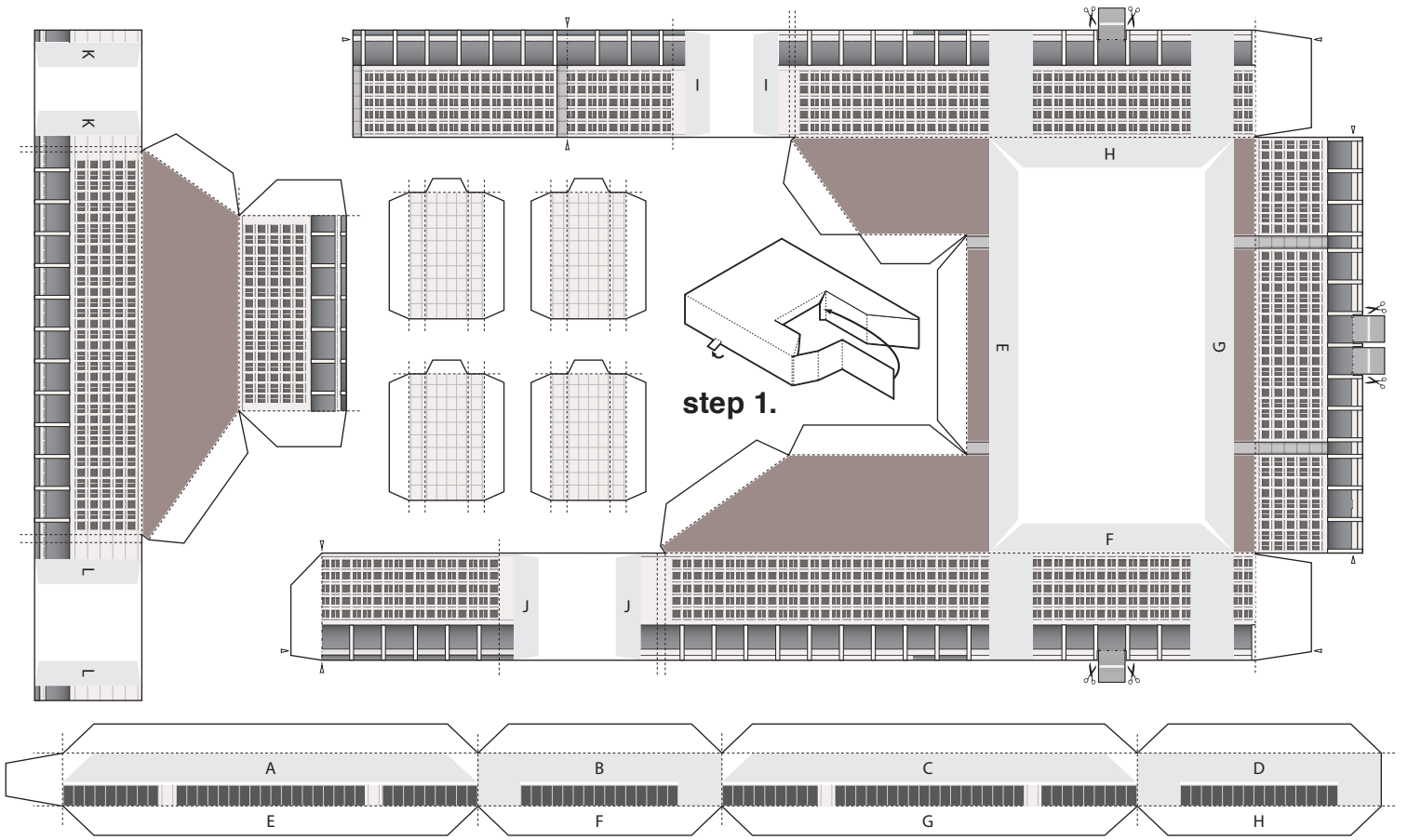
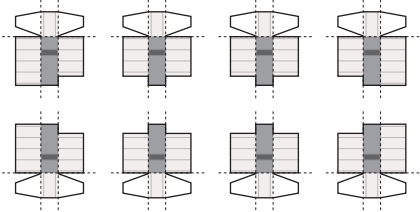


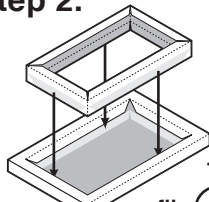
J. Edgar Hoover FBI Headquarters

1:2000 scale model

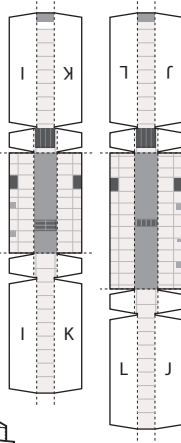
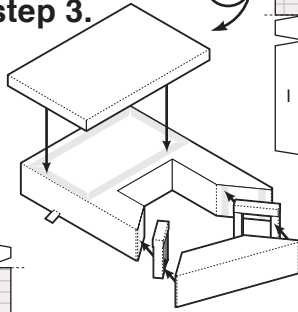
© wurlington press - matt bergstrom



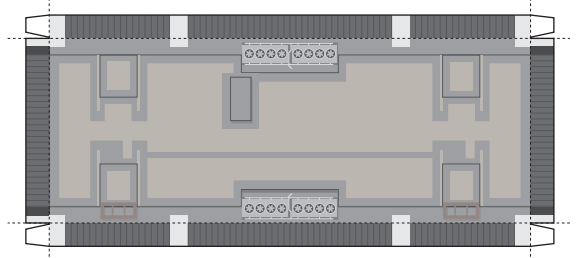
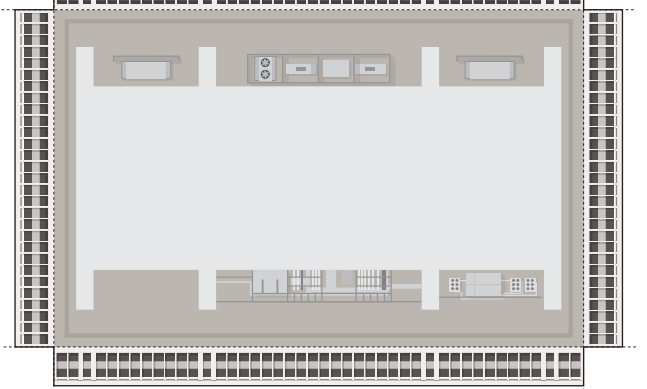
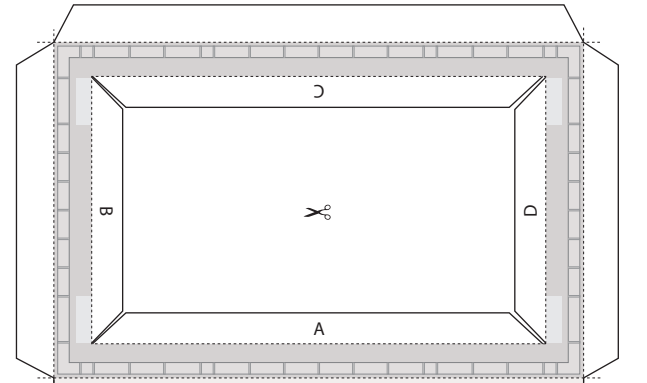
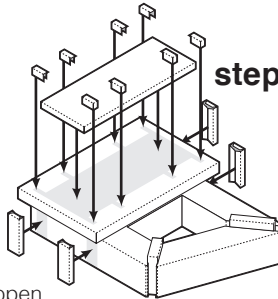
step 2.



step 3.



step 4.



This massive concrete office block is reviled by many as the ugliest building in Washington, DC. The home of the Federal Bureau of Investigation was designed by architect Charles F. Murphy with public shops and open arcades, but due to security concerns the ground level was never utilized after the building opened in 1974. A popular tour of the FBI laboratories attracted over a million visitors a year until discontinued in 2001.

In 2013 the General Services Administration announced plans to vacate the building. The exterior walls were deteriorating due to lack of maintenance, and the interior was deemed outmoded and inadequate for the FBI's larger staff. It is unlikely the building will be reused, and this unique example of Brutalist architecture will be demolished.