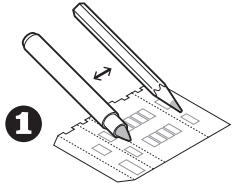
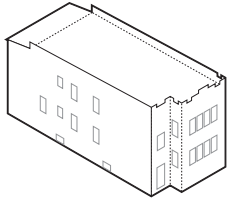


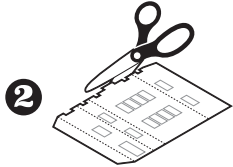


Chicago
Vernacular
Architecture
1:87 Scale Model

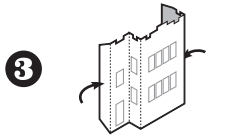
Two-Flat



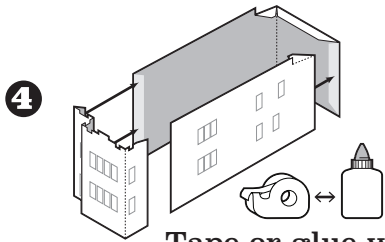
1 Color with marker or pencil



2 Cut on outlines



3 Fold to shape

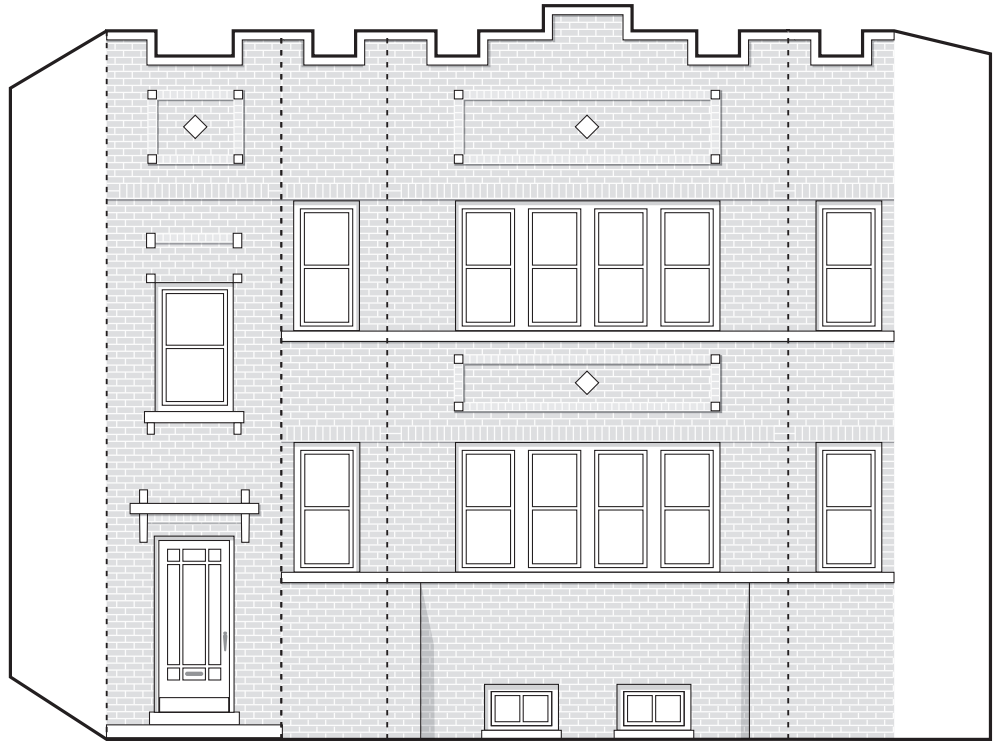


4 Tape or glue walls

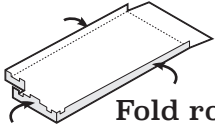
The common Chicago "Two-Flat" is a small multi-unit building with two or three apartments and a shared entry. Thousands of two-flats were built in Chicago in the first half of the 20th century in a wide variety of styles. While some are built of wood or stone, the two-flat is most often associated with brick construction.

Many two-flats were built by second-generation immigrants who were first-time homeowners. The extra apartment could provide rental income to cover the taxes and mortgage or could be rented to family members. Sometimes a smaller unpermitted apartment was added in the basement.

Owner-occupied two-flats are an important part of maintaining affordable housing in Chicago.

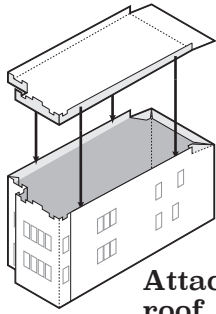


5



Fold roof walls up

6



Attach roof

