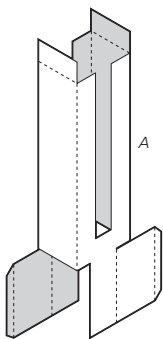


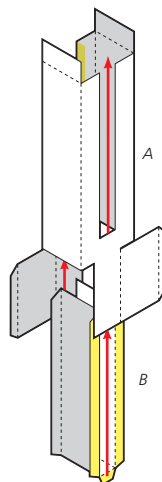
# EMPIRE STATE BUILDING

How to build the paper model featured in the book *American Landmarks: Miniature Models to Cut and Assemble* by Matt Bergstrom (©2012 Dover Publications, Inc.)



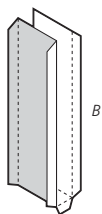
1

First cut out the large piece A. Fold and glue the side tab to create an open box. Make sure the corners are square and even. Don't fold or glue the top flaps or bottom flaps yet.

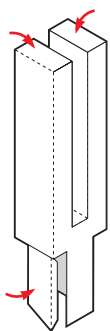


Slide the U-shaped piece inside the box so that the rows of windows in the interior and exterior match up. Try test-fitting the piece before gluing it in place.

Make sure that piece B fits snugly inside piece A with its corners flush with the edges of the walls. Reach inside the box with a tweezers from the top and bottom to squeeze the glued tabs in the right place.



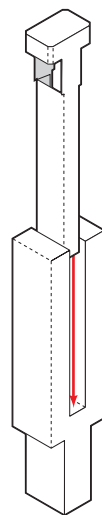
Next cut out the interior piece B. Fold the piece into a U-shape with the windows facing the inside and the tabs folded back at a right angle.



2

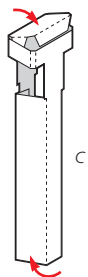
After the piece B is in the correct place, fold down the top rooftops and fold in the bottom panels to complete the central part of the tower

Before the glue is dry, look at the piece from several angles to make sure that all the corners are square and the piece is straight without twists or crooked edges.



Before gluing piece C inside the U-shape of the central part of the tower, test to make sure the parts fit together well. You may have to trim or adjust the edge of the interior piece if it does not fit perfectly. The rows of windows of both pieces should line up when they are correctly matched.

With a very small amount of glue on the edges, slide interior piece C inside the U-shape down the middle. Match up the rows of windows upwards and downwards. If necessary, use a blunt toothpick or similar tool to push the smaller piece inward or outward to position it in the center.



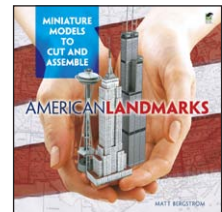
Next cut out the piece C. Score the folds for all the small corners at the top of the piece.

Glue the small tab at the top to connect the walls around and then fold down the roof, tucking the roof tabs inside the walls.

Then fold over the bottom panel and glue it inside the bottom part of the wall. Make sure the piece is glued straight and square.

See other paper model kits in the book *American Landmarks: Miniature Models to Cut and Assemble*

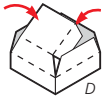
ISBN 978-0486482811



# EMPIRE STATE BUILDING

How to build the paper model featured in the book *American Landmarks: Miniature Models to Cut and Assemble* by Matt Bergstrom (©2012 Dover Publications, Inc.)

**3**



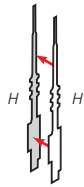
Score and cut out the pyramid-shaped base of the mooring mast D. Glue the side tab to connect the side walls of the piece, and then after the glue is set, fold the top down, tucking the flaps inside. Then fold the sloping sides inwards and glue in place.



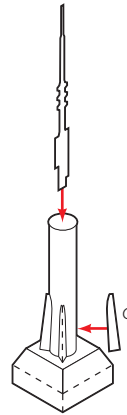
Cut out the mooring mast E and roll it into a tight tube.

If you'd like, you can substitute a round toothpick or bamboo skewer cut to the right length with the paper glued around it.

Add the tiny circular roof F to the top of the mooring mast.



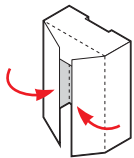
Cut out the two sides of the antenna H and glue back-to-back. You can strengthen the antenna with a drop of cyanoacrylate super glue either before connecting the two pieces or after letting the assembled piece dry.



Add the mooring mast to the top of the base, then glue the four decorative wings G to the four corners at the base of the mooring mast.

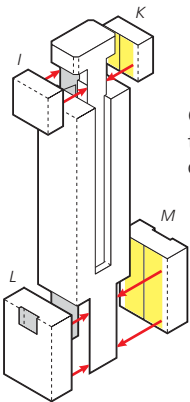
Then add the antenna to the top.

**4**

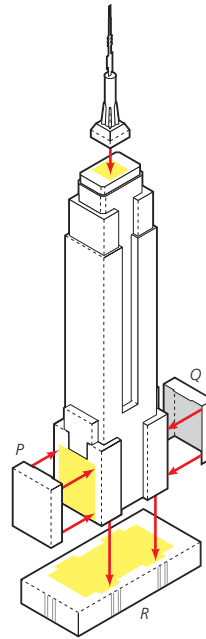


Next, cut out the pieces I & K and L & M.

For the pieces L & M, first score the folds and then cut out the squares marked by scissors symbols. Fold the piece into a box shape with the roof tab tucked behind the side flaps.



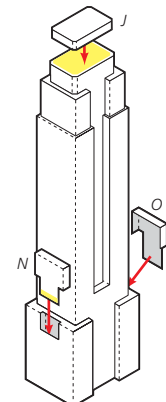
Glue the two upper tiers I & K near the top of the tower, and the lower tiers L & M at the base of the tower.



Finally, assemble the base of the building R. Glue the tower in the center of the roof of R.

Assemble the lowermost setback tiers P & Q, then glue in place at the base of the tower and against the rooftop.

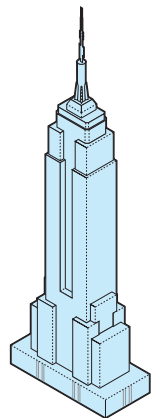
Finally, add the mooring mast assembled in Step 3 to the top of the building.



Assemble the octagonal piece J and glue it in place at the top of the tower.

Assemble the small tiers N & O and tuck them into the holes of the setbacks L & M. Use a tweezers from the bottom of the tower to position the small pieces in the correct place.

Now your paper model of the Empire State Building is finished!



See other paper model kits in the book *American Landmarks: Miniature Models to Cut and Assemble*

ISBN 978-0486482811

